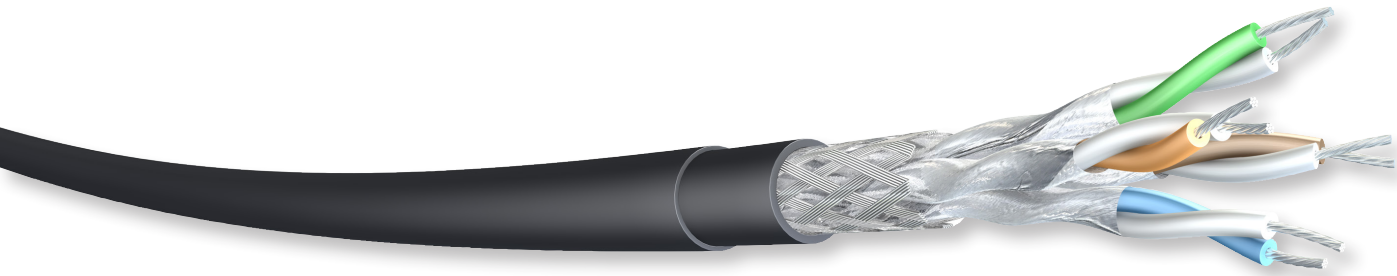


CAT6.A S/FTP 24/7awg Upjacketed Tactical Ethernet

Event[®] **studio**

Event[®] **tour**



Application

Tactical ethernet cable for touring and other portable applications. The compounds used in the unique dual jacket make the cable supple and agile. Outer jacket can be removed easily to allow termination to our XL shielded RJ45 FNXL connectors on the inner sheath in conjunction with our FNSRBXL strain relief boot or will fit comfortably inside the Neutrik etherCON™ Cable Connector Carrier. For direct termination to the outer sheath our Tool-less field connectors FNFT6A or FNFTG6A can be used.

etherCON™ is a registered trademark of Neutrik.

Cable Design

- ConductorStranded tinned copper wire, 24 awg (7/0,202mm)
- InsulationCellular PO : Ø 1,40 mm nom.
- Pair ScreenAluminium/polyester taped pairs
- Cable core4 screened pairs cabled together
- Overall ShieldTinned copper wire braid. 50% nom. coverage
- Inner Jacket.....Special Black PVC : Ø 7,70 mm nom.
- Outer Jacket.....Special Soft Black TPM : Ø 8,50 mm nom.



Pair Identification

- Pair 1 White/Blue
- Pair 2 White/Orange
- Pair 3 White/Green
- Pair 4 White/Brown

CAT6.A S/FTP 24/7awg Upjacketed Tactical Ethernet

Performance

Frequency Range:	1 - 500 MHz
Coupling Attenuation:	Type I
DC Resistance:	93 Ω/km nom.
Max. Resistance Unbalance:	2 %
Capacitance Unbalance:	1.2 pF/m max.
Velocity of Propagation:	78 % nom.
Propagation Delay Skew:	25 ns/100m max.
Dielectric Strength:	500 V/minute
Dielectric Strength to Shield:	500 V/minute
Min. Insulation Resistance :	5 GΩ • km
Min. Bend Radius:	55 mm
Operating Temperature:	- 35 °C to + 70 °C

Freq. (MHz)	Attenuation (dB/100m) 20°C		PS NEXT Loss (dB)		NEXT Loss (dB)		RL (dB)		PS ANEXT (dB)		PS ELFEXT (dB)		ELFEXT (dB)	
	Typ.	Cat.6A	Typ.	Cat.6A	Typ.	Cat.6A	Typ.	Cat.6A	Typ.	Cat.6A	Typ.	Cat.6A	Typ.	Cat.6A
1	3.0	3.1	95	72.3	98	75.3	22	20	70	67	85	65	88	68
4	5.6	5.8	95	63.3	98	66.3	25	23	70	67	73	53	76	56
10	8.7	9.0	95	57.3	98	60.3	28	25	70	67	65	45	68	48
20	12.4	12.8	90	52.8	93	55.8	28	25	70	67	59	39	62	42
30	15.3	15.8	85	50.1	88	53.1	27	23.8	70	67	55.4	35.4	58.4	38.4
100	29.0	29.9	80	42.3	83	45.3	24	21.1	67	62.5	45	25	48	28
150	36.2	37.4	78	39.7	81	42.7	22	18.8	66	59.8	41.5	21.5	44.5	24.5
200	42.5	43.8	78	37.8	81	40.8	21	18	65	58	49	19	52	22
250	48.2	49.7	72	36.3	78	39.3	20	17.3	63	56.5	37	17	40	20
300	53.4	55.1	75	35.1	78	38.1	19	17.3	62	55.3	35.5	15.5	38.5	18.5
400	63.1	65.1	70	33.3	73	36.3	19	17.3	61	53.4	33	13	36	16
500	71.9	74.0	70	31.8	73	34.8	19	17.3	59	52	31	11	34	14

*Supplied cables meet the minimum Cat. 6A transmission requirements as per IEC 61156-6 Ed. 2

CAT6.A S/FTP 24/7awg Upjacketed Tactical Ethernet

Standards

Applicable Standards: IEC 61156, IEEE 802.3at (PoE+), ISO/IEC 11801-1, RoHS 3 2015/863/EU

Specification

Part Number	Inner Jacket Diameter [mm nom.]	Overall Diameter [mm nom.]	Weight [kg/km]	Connector for use over inner jacket	Connector for use over outer jacket	Run Length [m]
4902	7,70	8,50	70	FNXL	FNFT6A or FNFTG6A	100